

/// REVOLUTION

TROLLING MOTORS

BY **Pro Controll**

**FREEDOM TO FISH
HOW YOU WANT**

User Guide

This manual contains important safety information.
Read it before installing and using your trolling motor.
Keep it for future reference.

Unless otherwise noted, the information in this User Guide applies to both the L and S Models.

Safety First!

- » Always wear a life vest, and insist that all passengers also wear one.
- » Never let children operate the motor unsupervised.
- » Never use the motor if people or pets are swimming nearby.
- » Keep loose hair and clothing away from the motor.
- » Watch for floating or submerged hazards.
- » Do not use the motor in water less than 2 feet (0.6 m) deep.
- » Never use the motor in waves over 3 feet (0.9 m) high.
- » Never immerse the control unit. If it falls into the water, disconnect the battery before attempting to retrieve it. Dry it thoroughly before attempting to use it.
- » The motor was not intended for use at temperatures below -4°F (-20°C) or above 113°F (45°C).
- » Never exceed recommended battery voltage.
- » Do not modify your motor.
- » Never mount or dismount the motor with the battery connected.
- » Never service the propeller with the battery connected.

Table of Contents

Safety First!	2
Welcome	4
Registration and Serial Number	5
Choosing and Connecting a Battery	6
Connecting an Additional Battery or Circuit Breaker	8
Mounting Your Motor	10
Controls and Safe Use	12
Daily Checks and Routine Maintenance	14
Replacing the Propeller	15
Troubleshooting	16
Accessories and Parts Diagram	18
Replacement Parts List	19
How to Contact Customer Service	20
RM Industries, Inc. (Pro Controll) Limited Warranty	21
Declaration of Conformity for Recreational Craft	22
Pro Controll Products and Accessories	23

Welcome

Thanks for choosing a Revolution Trolling Motor by Pro Controll for your freshwater fishing adventures.

Fishing preferences are incredibly personal. There are many variables that go into a successful day of fishing: clarity of – and structures under – the water; weather; how many people are in your boat. Your trolling motor should be flexible enough to allow you to fish your way: alone or with family and friends; standing in the front of the boat or sitting in the back; close to structures and underwater weeds; on windy days or on calm waters.

Our patented Pro Controll bracket means that Revolution Trolling Motors are the only hand-controlled trolling motors on the market that can be mounted on the bow – or transom – of your jon boat or utility boat.

At Pro Controll, we give you the freedom to fish how you want.

Before operating your new motor

Read this manual completely before you mount your new motor. The next few pages contain information you need to use your motor safely and keep it in good condition. Failure to follow these instructions could result in injury to yourself or others and/or damage to the motor.

Look for this symbol

Please pay special attention to warnings throughout this manual, which are marked with the symbol shown below:



Look for this symbol for warnings throughout the User Guide.

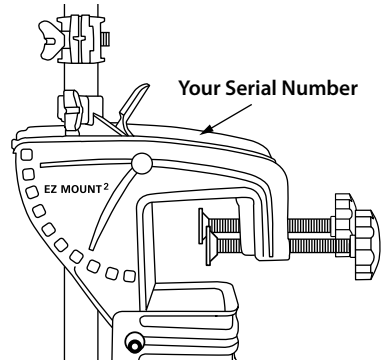
Registration and Serial Number

Registration

Remember to keep your receipt and immediately register your Revolution Trolling Motor. You can complete registration online at www.procontroll.com.

Serial number

Your serial number helps determine the specific model and year of manufacture. When contacting Customer Service or registering your product, you will need to know your product serial number. **The serial number on your Revolution Trolling Motor is located on the top of the bracket.** We recommend you record this information for future reference.



Motor information

Model:

Serial Number:

Purchase Date:

Where purchased (If online, specify retailer):

IMPORTANT: Do not return your Revolution Trolling Motor to your retailer. Your retailer is not authorized to repair or replace this unit. For help, call Customer Service at 913-721-9800 or review our return policy instructions, which are posted at: www.procontroll.com.

Choosing and Connecting a Battery

For best results, use a deep-cycle/marine battery rated at 50 amp-hours or higher. Pro Controll's Revolution motors are engineered for lead-acid batteries. Lithium or other batteries are not recommended.

Please refer to the chart on Page 7 for voltage requirements. 32-, 40-, and 50- pound thrust motors (14.5 kg, 18 kg, and 22.5 kg thrust) require a 12-volt battery.

86-pound thrust (39 kg thrust) motors require one 24-volt battery, or two 12-volt batteries connected in series. **For additional information about using two 12-volt batteries as a 24-volt power source, please refer to Page 8.**

Choosing a longer cable

To extend the battery cables provided, we recommend using the Trolling Motor Battery Harness by Pro Controll with 8-gauge (3.26 mm) wire.

Circuit protection

We recommend the use of a manual-reset circuit breaker within 1' (0.3 m) of the battery. Visit www.procontroll.com for purchase options of the Circuit Breaker by Pro Controll.

For additional information on connecting more than one battery and on the benefits of a circuit breaker, please refer to "Connecting an Additional Battery or Circuit Breaker" on Page 8.



Charging any lead-acid battery releases hydrogen and oxygen into the surrounding atmosphere. Ensure adequate ventilation to prevent the buildup of potentially explosive gases.



Lead-acid batteries contain sulfuric acid (H_2SO_4) that causes serious chemical burns. Never allow any liquid that leaks or spills from a battery to touch your skin or clothes. In the event of accidental contact, flood exposed skin or eyes with water. Contact a poison control center for additional first-aid advice or seek medical attention.

How much power do I need?

Boat Wt. (lbs)	Max Boat Length	Recommended Minimum Thrust	Battery Required
1,500 or less	14'	32 lbs / 14.4 kg	One 12-volt battery
2,000	17'-18'	40 lbs / 18 kg	One 12-volt battery
2,500	20'-21'	50 lbs / 22.5 kg	One 12-volt battery
4,000	25'	86 lbs / 39 kg	Two 24-volt batteries

Connecting a battery



Always connect the battery after you mount the motor and launch your boat.



Ensure that the speed control handle is in the neutral position prior to connecting the battery.

- » Connect the black wire from the trolling motor to the negative (-) terminal on the battery.
- » Connect the red wire from the trolling motor to the positive (+) terminal on the battery.
- » Make sure the cables are firmly tightened for a good electrical connection.



To connect more than one battery, see "Connecting an Additional Battery or Circuit Breaker" on page 8.

Connecting an Additional Battery or Circuit Breaker

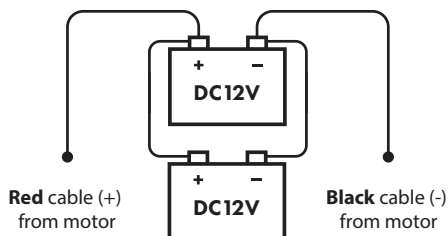
Connecting two 12-volt batteries in parallel for extended trolling time

If you're fishing with a 32-, 40-, or 50-pound thrust (14.5 kg, 18 kg, and 22.5 kg thrust) Revolution Trolling Motor, you can wire a second battery in parallel for up to twice the trolling range.



Never mix batteries of different type, size, or condition.

1. Use 8-gauge (3.26mm) wire with ring or spade connectors to connect the two negative (-) terminals.
2. Use 8-gauge (3.26mm) wire with ring or spade connectors to connect the two positive (+) terminals.
3. Connect the black wire from the motor to the closest battery's negative (-) terminal.
4. Connect the red wire from the motor to the closest battery's positive (+) terminal.



Connecting two 12-volt batteries in series to create a 24-volt power source

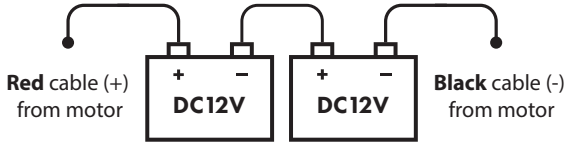
86-pound (39 kg) thrust motors are designed for use with 24-volt batteries. You can create a 24-volt power source by connecting two 12-volt batteries in series.



For use with 86-pound (39 kg) thrust motors only!



Connecting batteries in series will damage 32-, 40-, or 50-pound thrust (14.5 kg, 18 kg, and 22.5 kg thrust) motors.



Never mix batteries of different type, size, or condition.

1. Use 8-gauge (3.26mm) wire with ring or spade connectors to connect the negative (-) terminal from battery #1 to the positive (+) terminal of battery #2.
2. Connect the black wire from the motor to the negative (-) terminal of battery #2.
3. Connect the red wire from the motor to the positive (+) terminal of battery #1.

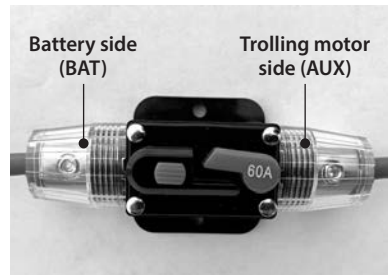
Installing a circuit breaker

At Pro Controll, we recommend the use of an appropriate DC circuit breaker between your battery and your Revolution motor. A circuit breaker is also a legal requirement in some jurisdictions. Visit www.procontroll.com for more information on our Circuit Breaker by Pro Controll.

An internal combustion motor will stall if the propeller becomes jammed by weeds, fishing line, rocks or logs, or just hitting the bottom. However, DC electric motors can't stall. If the propeller is jammed, the motor will draw more power. It may even draw enough power to damage the motor, controls, or power cables. A circuit breaker prevents this type of damage by cutting power to the motor if the draw exceeds a certain amperage.

Motors with thrust ratings of 32 and 40 pounds should be protected by a 50-amp circuit breaker. Motors with thrust ratings of 50 and 86 pounds should be protected by a 60-amp circuit breaker.

1. Mount the circuit breaker on your boat at a point less than 1' (0.30m) from the battery.
2. Connect the positive lead from your Revolution Trolling Motor to the "AUX" terminal on the circuit breaker. (See diagram at right.)
3. Connect the positive lead from the battery to the "BAT" terminal on the circuit breaker.
4. Connect the negative lead as normal.



Mounting Your Motor



Always mount your trolling motor to your boat before putting the boat in the water.



Never connect the battery until you've finished all mounting steps and your boat is in the water.

Figure A

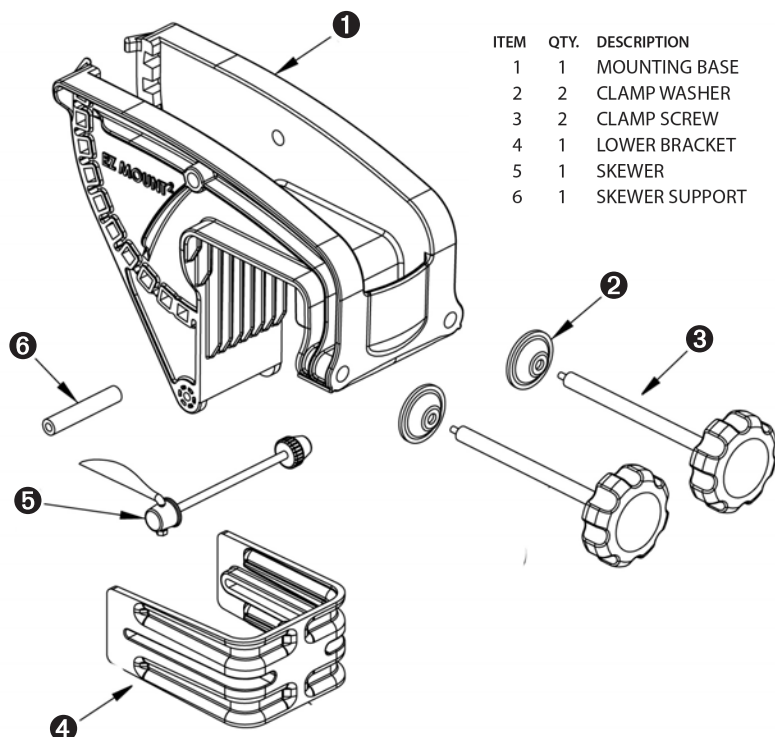
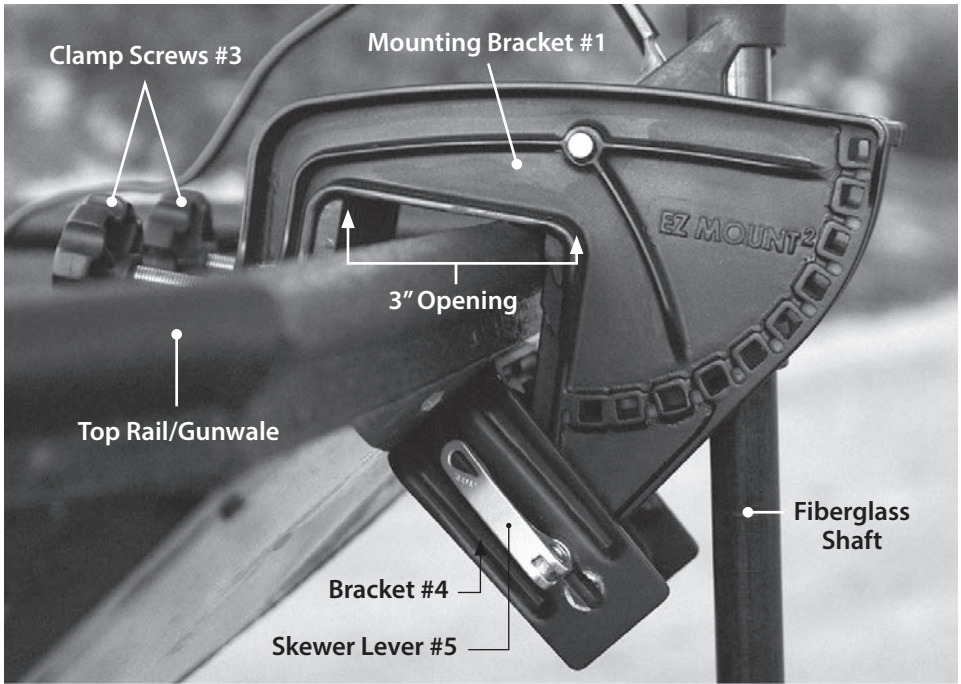


Figure B



1. Loosen Bracket (#4) by releasing the Skewer Lever (#5) so Bracket will move freely.
2. With the Skewer Lever released, loosen the nut at the opposite end of the Skewer by hand.
3. Loosen Clamp Screws (#3) so that the Mounting Bracket (#1) will slide over Top Rail or Gunwale, keeping the Clamp Screws (#3) on the inside of the boat.
4. Position Mounting Bracket (#1) so it is resting on Top Rail or Gunwale of boat.
5. Hold Mounting Bracket (#1) against the outside of the boat with mounting base in a vertical (plumb) position, slide Bracket (#4) against outside of hull at an angle that conforms to the hull angle and gives the most surface contact with the hull. (The fiberglass shaft should enter the water straight up and down.)
6. Tighten nut on Skewer (#5) firmly by hand, then clamp down the Skewer Lever (#5) .
7. With Bracket (#4) secured, tighten Clamp Screws (#3) against inside of boat. Do not over tighten.
8. After securing, if motor is not plumb, adjust with Tilt Lever on trolling motor bracket.

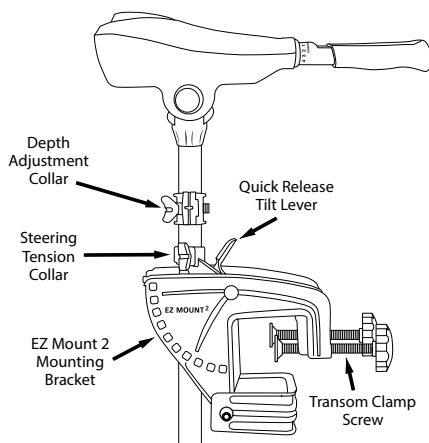
Controls and Safe Use

Raising and lowering the motor



Disconnect the battery before raising or lowering the motor.

Use the Quick Release Tilt Lever to raise the trolling motor up out of the water and to stow it. The Tension Collar will need to be loosened in order to raise the motor for depth control or stowing. Once out of the water for stowing, use the Quick Release Tilt Lever to fold the motor into the boat area. Put the trolling motor in the water when it is time to fish. Press the lever with your thumb while holding the head of the trolling motor with the other hand to control the tilting, raising and lowering of the motor. Tilt the motor as needed and release the lever to lock it in the desired position.



Adjusting the motor angle

Use the Quick Release Tilt Lever to fine-tune the angle of the shaft when fishing. Press the Quick Release Tilt Lever to adjust the tilt angle of the motor. Releasing the lever will lock the motor unit in the desired position.

Depth Adjustment Collar

To adjust motor depth, loosen the tension collar screw on the Depth Adjustment Collar and slide the shaft up or down so that the motor is approximately 12" below the surface, then re-tighten the tension screw. Loosen the screw on the Depth Adjustment Collar and position against the Steering Tension Collar, then retighten screw to set the motor depth.

Steering Tension Collar

Tighten or loosen the knob on the Steering Tension Collar to adjust the amount of friction in the steering mechanism.

Tiller operation

Speed: set the handle on the tiller to select one of the five forward or three reverse speeds. Align the arrow marker with "0" to stop the motor. **Tiller Angle:** on S-Series motors only, lift up or push down on the Tiller to adjust angle of the head.



Always allow the motor to come to a stop before switching from forward to reverse. Failure to do so may damage the motor.

Battery meter

There are 10 LED lights on the indicator display. If all 10 are illuminated, your battery is at or near full power. Keep an eye on the battery level as you fish. We recommend you recharge the battery when the indicator reads 50% charge, but never let the battery fall lower than 20% to ensure a long life. Lead-acid batteries, such as deep cycle batteries, run the risk of sulfation if left uncharged for too long. A sulfated battery has a buildup of lead sulfate crystals and is the number one cause of early battery failure in lead-acid batteries.



Your trolling motor was not designed for use with a lithium battery. The battery meter is not a reliable indicator of lithium battery status.

Taking the motor off the boat

To avoid damaging your motor in transportation, we recommend removing it before you tow your boat



Disconnect the battery before removing your trolling motor.

Remove the motor by loosening the Transom Clamp Screws. Lift motor and mount off. On some boats, you may also need to loosen the Skewer (#5) so the Bracket (#4) will clear the Gunwale (see Figure A on Page 10).

Daily Checks and Routine Maintenance



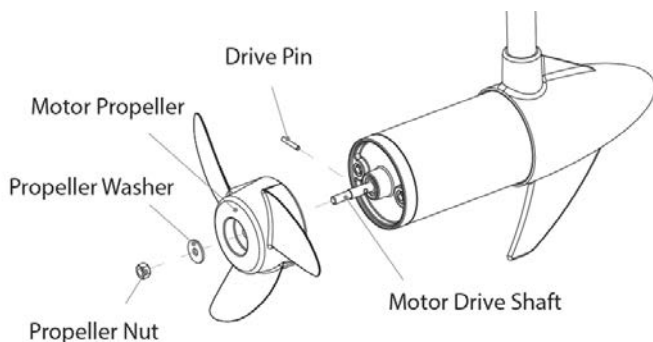
Always disconnect the battery before you handle the propeller or motor unit.

1. Check behind the propeller after each use for weeds, fishing line or other debris that may get wrapped behind the propeller.
2. Lubricate all the pivot points with a non-aerosol lubricant. Never use aerosol lubricants to grease or oil any part of the unit, because aerosols contain propellants that can damage your motor or control unit.
3. Inspect the main battery cables and look for loose or corroded connections.
4. Tighten any loose fasteners.
5. If appropriate, reconnect the battery and tighten the battery leads.

Replacing the Propeller



Always disconnect the battery before handling the propeller or motor unit.



1. Hold the propeller blade to prevent it from turning.
2. Loosen the Propeller Nut using the wrench that was supplied with the motor.
3. Remove the Propeller Nut and Propeller Washer.
4. Pull the propeller off. If it will not come free, hold one blade and gently tap the other blades from behind.
5. Examine the propeller for damage, including damage to the surfaces that mate with the motor unit. If damaged, the propeller should be replaced.
6. Examine the Drive Pin. If it is bent or damaged, the pin should be replaced.
7. Reinstall the Drive Pin.
8. Reinstall the propeller.
9. Reinstall the Propeller Washer and hand-tighten the Propeller Nut.
10. Tighten the Propeller Nut an additional quarter turn with the wrench.



Do not hammer the Propeller Pin out. Doing so may bend the Motor Drive Shaft.

Troubleshooting

Loss of power



Disconnect the battery before servicing the propeller.

- » Propeller may be fouled. Remove propeller, clean it, and replace if needed.
- » Battery connections may be corroded.
- » Low battery voltage. Recharge battery.
- » Battery may be faulty. Recharge and check.
- » Insufficient cable size from battery to motor. 8-gauge (3.264mm) wire is recommended.
- » Bad or faulty connection in boat wiring or electric motor wiring.
- » Permanent magnet in motor may be cracked or chipped. Motor will whine or grind. Take your motor to an authorized trolling motor service center for repair or contact Pro Controll Customer Service for advice.

Excessive noise or vibration



Disconnect the battery before servicing the propeller.

- » Propeller may be fouled or have damage, creating an imbalance. Remove propeller, clean and examine it, and replace it if needed.
- » Propeller may be loose. Check to see if the propeller nut is tight.

- » Turn the propeller by hand. It should turn easily with a slight magnetic drag. If it does not turn easily, the bearing or bushes may be worn out. Take your motor to an authorized trolling motor service center for repair or contact Pro Controll Customer Service for advice.
- » Remove propeller, reconnect battery and run the motor at medium speed. If the armature appears to wobble as the motor spins, take your motor to an authorized trolling motor service center for repair or contact Pro Controll Customer Service for advice.

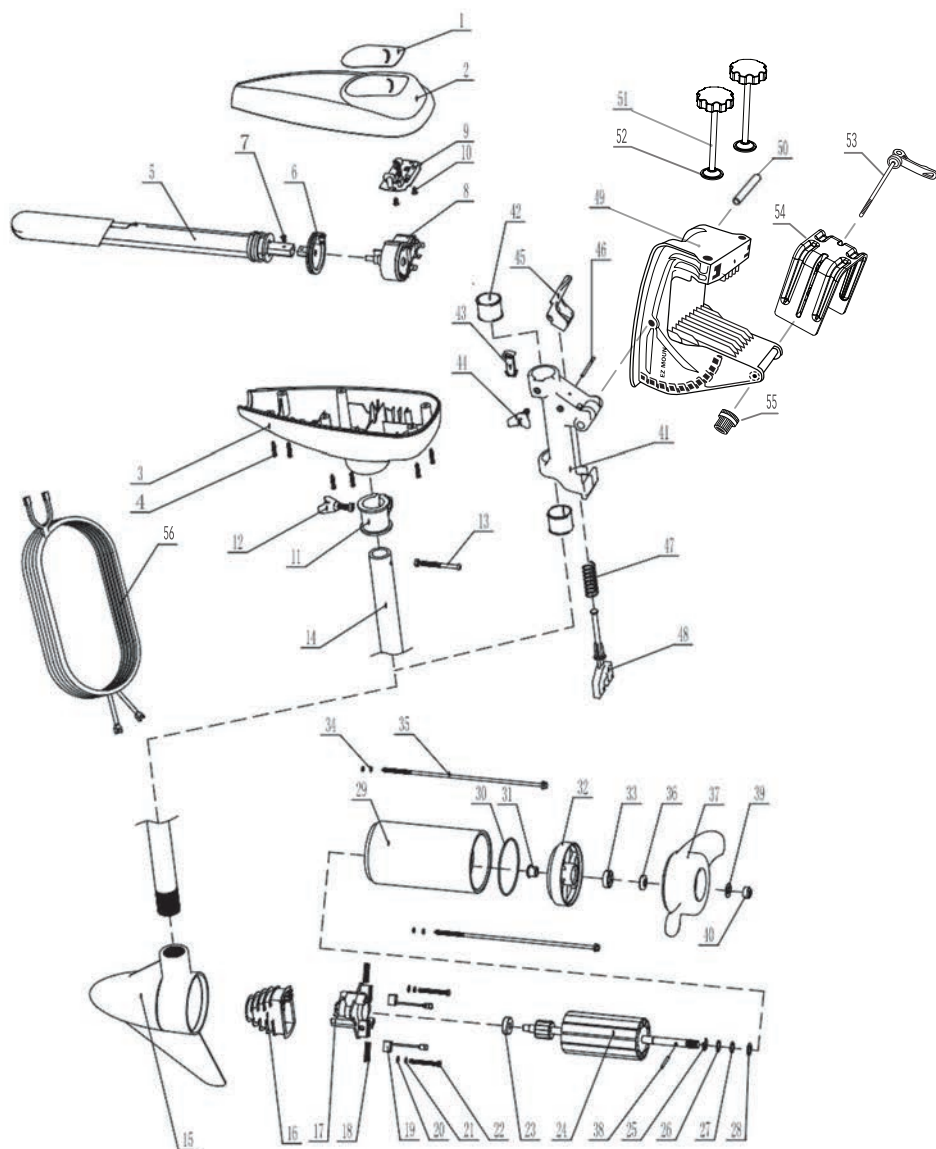
Motor fails to run

- » Check for loose or corroded connections on battery cables.
- » Check the circuit breaker. Reset if necessary.
- » Check battery voltage. Recharge or replace battery as required.
- » If you are confident that your motor is getting power and is still not working, take your motor to an authorized trolling motor service center for repair or contact Pro Controll Customer Service for advice.

Motor loses one or more speeds

- » Loose connection in top housing.
- » FWD/REV-5 speed Switch damaged.
- » Speed Coils in lower unit may be burned out.
- » Take your motor to an authorized trolling motor service center for repair or contact Pro Controll Customer Service for advice.

Accessories and Parts Diagram



Replacement Parts List

Part #	Part Name	Qty	Part #	Part Name	Qty
1	Decal w/Battery Meter	1	29	Center Housing Assembly Magnet	1
2	Control Box Cover	1	30	O-Ring	1
3	Control Box	1	31	Bearing-Flange	1
4	SS Screw - 4mm-2.0 X 20mm	6	32	Plain End Housing Assembly	1
5	Telescoping Handle	1	33	Seal	1
6	Handle Pivot	1	34	O-Ring	4
7	Handle Pivot Screw	1	35	Through Bolt	2
8	FWD/REV-5 Speed Switch	1	36	Seal Shield	1
9	LED Battery Meter	1	37	Propeller	1
10	Battery Meter Screws	2	38	Drive Pin	1
11	Depth Adjustment Collar	1	39	Washer	1
12	Clamp Knob	1	40	Lock Nut	1
13	Cap Screw - 5mm-0.80 X 50mm	1	41	Hinge Bracket	1
14	48" Composite Shaft	1	42	Hinge Bracket Bushing	1
15	Brush End Housing Assembly	1	43	Snap-in Tension Block	1
16	Speed Coil	1	44	Tension Knob	1
17	Brush Plate w/Holder	1	45	Tilt Lever	1
18	Compression Springs	2	46	Tilt Lever Pin	1
19	Brush Assembly	2	47	T-Bar Spring	1
20	Brush Plate Screw	2	48	Plastic T-Bar	1
21	Steel Washer	2	49	Mounting Bracket	1
22	Steel Washer	2	50	Hinge Pin	1
23	Ball Bearing	1	51	Clamp Screw	2
24	Armature Assembly	1	52	Clamp Screw Washer	2
25	Retaining Ring	1	53	Skewer	1
26	Steel Washer	1	54	Lower Bracket	1
27	Steel Washer	1	55	Skewer Nut	1
28	Nylon Washer	1	56	Internal 10GA Wire Harness with Spade Terminals	1

For pricing and to purchase replacement parts, visit www.procontroll.com.

How to Contact Customer Service

If you have questions or concerns, please contact us by phone at (913) 721-9800.

Or email customerservice@ProControll.com

Hours: 8:30 a.m.-4:30 p.m. (Central Time Zone)

RM Industries, Inc. (Pro Controll) Limited Warranty

RM Industries, Inc. (herein known as RMI) warrants to the original consumer purchaser of the Pro Controll Revolution trolling motor (herein known as the "Purchaser") that, for a period of two (2) years after the date of purchase of the Pro Controll Revolution trolling motor, the motor component of the Pro Controll Revolution product will be free from defects. This limited warranty does not cover any other part of Pro Controll Revolution product, including but not limited to the Brush End Housing Assembly or the Propeller, both of which are attached to the motor but are not part of the motor component. This limited warranty is not transferable by Purchaser to any other party.

THE PURCHASER MUST USE REASONABLE CARE IN MAINTENANCE AND OPERATION OF THE PRO CONTROLL REVOLUTION TROLLING MOTOR IN ACCORDANCE WITH THIS USER GUIDE. FAILURE TO FOLLOW THE INSTRUCTIONS IN THE USER GUIDE WILL VOID THE LIMITED WARRANTY.

THE PRO CONTROLL REVOLUTION TROLLING MOTOR IS DESIGNED FOR FRESHWATER USE ONLY. USING THE MOTOR IN SALT OR BRACKISH WATER VOIDS THE LIMITED WARRANTY.

RMI will at its option repair or replace the motor component of the Pro Controll Revolution trolling motor that is found by RMI to be defective within two (2) years after the date of purchase by Purchaser. RMI will pay the shipping charge to the Purchaser for any part(s) that may be shipped by RMI. RMI's sole obligation under this Limited Warranty is to repair or replace the motor component of the Pro Controll Revolution trolling motor if it is found to be defective by RMI within two (2) years after the date of purchase by Purchaser.

For warranty repair or replacement, Purchaser must provide dated proof of purchase and notify RMI of the request for warranty service.

Purchaser will notify RMI by email at info@procontroll.com or by phone at 913-721-9800 for warranty service.

RMI will attempt to provide parts as needed. If the motor component of the Pro Controll Revolution trolling motor is to be returned, Purchaser will be provided a Return Goods Authorization (RGA) number included with any return for warranty service, product exchange, or refund.

The RGA number must be written on the outside of packaging. **NEVER RETURN OUR PRODUCTS TO THE RETAILER!** RMI will provide and pay for a return label with the requested RGA.

This warranty covers defects in material or workmanship of the motor component of the Pro Controll Revolution trolling motor. This limited warranty does not cover any failure of the motor component of the Pro Controll Revolution trolling motor that results from misuse, improper installation, accident, abuse, neglect, modification, or improper maintenance of the Pro Controll Revolution trolling motor.

EXCEPT AS SPECIFICALLY PROVIDED IN THIS USER GUIDE AND TO THE MAXIMUM EXTENT PERMITTED BY APPLICABLE LAW, THE PRO CONTROLL REVOLUTION TROLLING MOTOR IS SOLD BY RMI TO PURCHASER "AS IS" AND RMI MAKES NO OTHER WARRANTY OF ANY KIND, WHETHER EXPRESS, IMPLIED, STATUTORY OR OTHERWISE AND RMI SPECIFICALLY DISCLAIM ALL IMPLIED WARRANTIES, INCLUDING ANY IMPLIED WARRANTY OF MERCHANTABILITY, AND FITNESS FOR A PARTICULAR PURPOSE.

The limited warranty described herein is the exclusive remedy of Purchaser for any defect in the Pro Controll Revolution trolling motor. In no event shall RMI have any liability to Purchaser or any other party for any and all incidental or consequential damages or expenses whatsoever. Some states do not allow disclaimer of implied warranties, or do not allow exclusion or limitation of incidental or consequential damages. The above limitations may not apply to Purchaser. This limited warranty gives Purchaser specific legal rights, and Purchaser may also have other rights that vary from state to state.

Declaration of Conformity for Recreational Craft

Propulsion Engine with the requirements of Directive 89/392/EEC as amended by 89/336/EEC.

Engine type approved according to: Directives 89/392/EEC, 89/336/EE

Description of Engine(s) and Essential Requirements"

- Engine Type: Outboard Engine
- Fuel Type: Electric

This declaration of conformity is issued under the sole responsibility of the manufacturer. I declare on behalf of the manufacturer that the motor(s) is (are) in conformity with the type(s) for which above mentioned EC, EMC and ROHC type-examination or type approval certificate(s) has (have) been issued and it will meet the requirements of Directive 89/392/EEC, 89/336/EEC as amended when installed in a recreational craft, in accordance with the manufacturer's supplied instructions.

WARNING

- This is not a life saving device. Do not leave children unattended with this product.
- The motor can be used in water deeper than 0.8m, never use in water with abundant water plant and rocks.
- To Prevent accidental damage of fiber glass shaft don't tense mounting bracket small screw too tight.
- Never put the upper part with handle into water. this item must be dry and cleaned, it must be kept in dry place after use.
- Connect the red cable to anode and the black cable to cathode.
- Ensure sufficient battery charge remaining. When there is only 4 lights are bright on the voltage meter, the motor must be unconnected with the batteries immediately.
- Particular care should exercise when using this item near anybody with long hair.
- Users with long hair should tie it up or wear swimming caps when using this boat.
- Never stick body parts, clothing or other objects in the vicinity of the propeller. Do not wear loose or flowing clothing or equipment that could be drawn into the propeller.
- Always wear a coast guard approved personal flotation device when using this motor.
- Always inspect the voyage area to ensure it is free of hazards or danger such as boats and swimmers before using this motor.
- Circumrotate clip and take the motor out of water when the motor does not work.



RoHS



MADE IN CHINA

Pro Controll Products and Accessories



The EZ Stand by Pro Controll®

Minimize your storage footprint, reduce clutter, and reduce the risk of accidentally damaging your trolling motor while it's stored in your garage, boathouse, shed, or basement. The slot in the heavy-duty nylon base of the EZ Stand fits the rudder and the rust-proof metal bracket secures your trolling motor's shaft. When it's time to go fishing, just lift the motor off the base.



Trolling Motor Battery Harness by Pro Controll®

Now it's easy to connect and disconnect your motor while leaving your battery at the stern of your boat. The harness is neatly held in our wire loom, so it's easy to route the wires under the gunwale and reduce tripping hazards. And it protects your motor with a built-in 60-amp circuit breaker. Our kit includes 20 feet of heavy 8-gauge wire and a pair of 14-inch crossover wires you can use to connect a second battery for even more uninterrupted fishing.

Trolling Motor Quick Connectors by Pro Controll®

Now you can equip your trolling motor with this safe, waterproof, quick disconnect system that includes all the components you need to easily remove or install your motor without tools.



Circuit Breaker by Pro Controll®

Our circuit breaker protects your trolling motor from electrical damage and features a 60-amp rating with manual reset. Fully waterproof. Compatible with all 12-, 24-, and 36-volt systems.



To purchase our products and accessories, visit
www.procontroll.com.

/// REVOLUTION

TROLLING MOTORS

BY **Pro Controll**®

**FREEDOM TO FISH
HOW YOU WANT**

Phone: (913) 721-9800

Email: customerservice@ProControll.com

Hours: 8:30 a.m.-4:30 p.m. (Central Time Zone)